



# 2021+ F-150 POLICE RESPONDER

## ORDERING GUIDE

[www.JOTTOPUBLICSAFETY.com](http://www.JOTTOPUBLICSAFETY.com)



# CONTOUR CONSOLES

The Ford F-150 SSV/PR (2021+) Contour Console has a dash contouring shape and will mount up to 20" of equipment. Simply replace the factory console in minutes using top-down installation. No drilling required. PPV OEM USB plugin is able to be relocated if needed, might not work for all trim levels. Each console comes standard with 20" of faceplates, (1) Magnetic Mic, 28" Ford F-150 SSV/PR and F-250-550 floor plate, and a built-in locking lid for secure, extra storage.



425-6524

|                      |                               |
|----------------------|-------------------------------|
| Rated Capacity ..... | 20" of face plates            |
| Length .....         | 29.36"                        |
| Width .....          | 12.59"                        |
| Height .....         | 10.15"                        |
| Depth .....          | (front to rear) 9.82" - 6.52" |
| Weight .....         | 28.8 lbs                      |





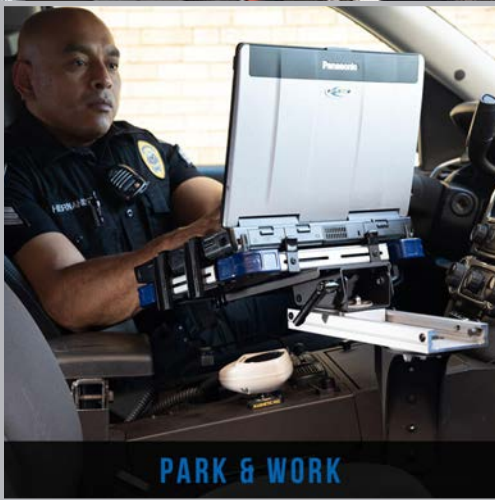
# MAMBA MOUNT CONSOLE SIDE MOUNT

Jotto Desk™ is upgrading and simplifying your on-duty experience with the Mamba Mount, a console side mount designed to work in each zone; Store & Drive, Park & Work, and Tactically Safe.



425-0150/4138

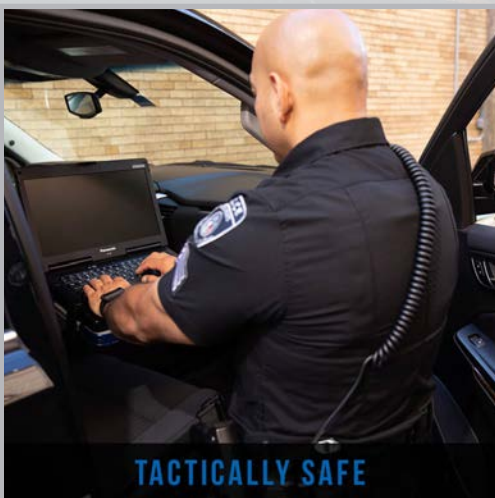
The Mamba Mount's 12" Extruded Motion Arm smoothly rotates from the driver to the passenger side with minimal force, no levers or brackets needed. You can quickly move and reset the Mamba Mount from the home position to a comfortable working position. Pull the rear Indexing Plunger to release the laptop and slide it forward to a working position. When finished, simply reverse the process, pull the front indexing plunger and slide the laptop back to the home or store position. At full extension, the desktop tilts and swivels for the optimal working position. The Mamba Mount easily attaches to the majority of Jotto Desk Contour Consoles and any other standard console with side mount fittings and fits all Jotto Desk A-MOD Desktops.



PARK & WORK



STORE & DRIVE



TACTICALLY SAFE





# FLOOR PLATE KIT & STANDARD CONSOLES

Secure Consoles and Console Accessories to your Ford F-150 Police Responder with a "No Holes Drilled" Floor Plate Kit.



**425-6501**

Length ..... 8 - 6.625"  
Width ..... 8.75"  
Height ..... 9.924 - 6.314"  
Weight ..... 8.55 lbs  
**Rated Capacity:**  
9" of face plates



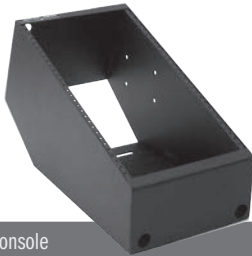
**425-6010** - 9" Standard Console

Length ..... 15.5"  
Width ..... 8.75"  
Height ..... 10.25 - 4.25"  
Weight ..... 10.6 lbs  
**Rated Capacity:**  
12" of face plates

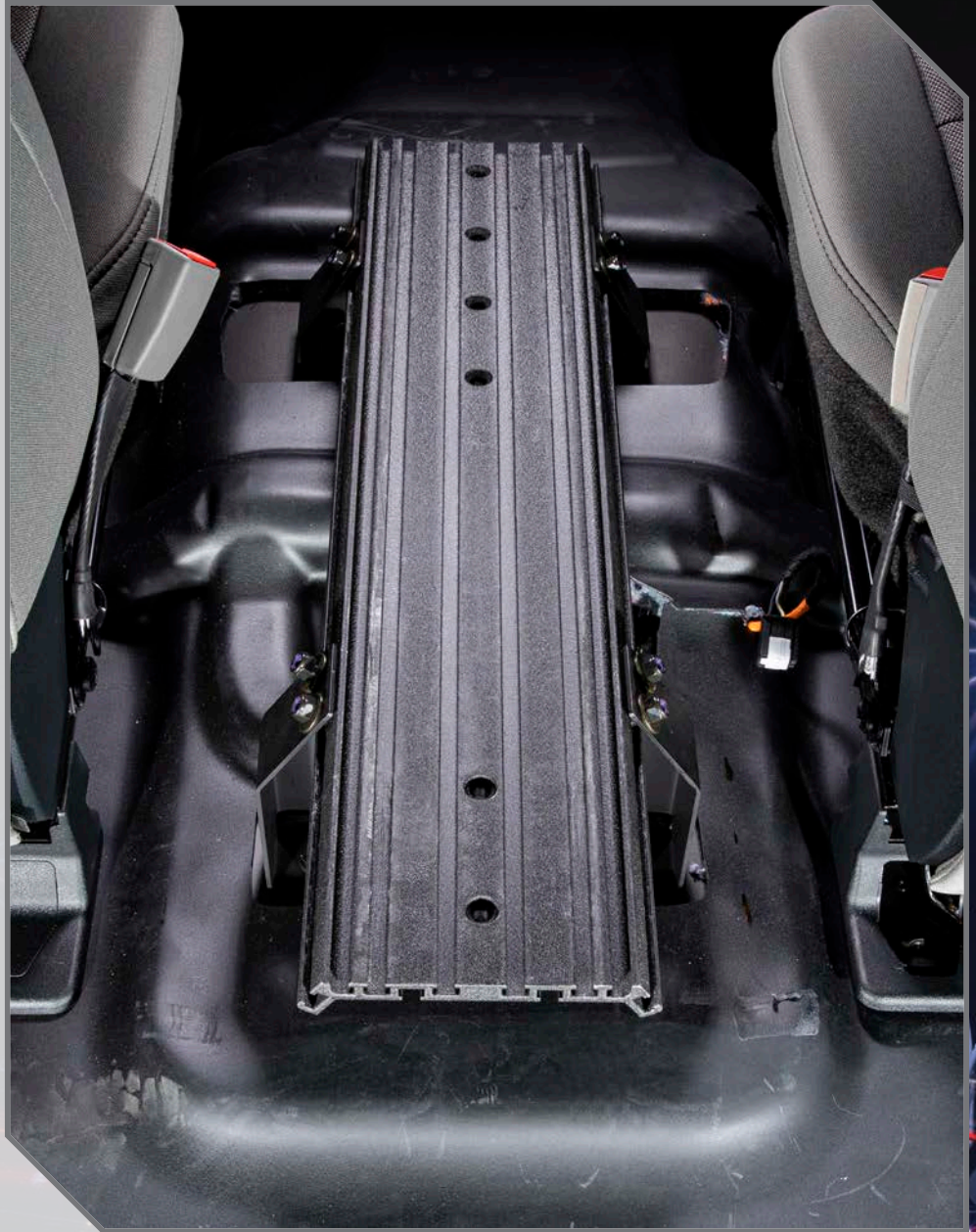


**425-6011** - 12" Standard Console

Length ..... 18"  
Width ..... 8.75"  
Height ..... 10.5 - 6.8"  
Weight ..... 12.8 lbs  
**Rated Capacity:**  
15" of face plates



**425-6012** - 15" Standard Console



## 18" LAZY "L" CONSOLES

This Lazy "L" Standard Console mounts 18" of radio, communications, siren and light control equipment. Sloped design allows console to be mounted from dash to between seats. Top-down installation using one of our floor plates and requires no drilling.



Length ..... 21"  
Width ..... 8.75"  
Height ..... 11.25" - 7.375"  
Weight ..... 12.3 lbs  
**Rated Capacity:**  
18" of face plates

**425-6232**





# WIDE BODY CONSOLE

The Wide Body Standard Console mounts 20" of equipment plus a built in lock box. The Integrated Pentax/Brother Wide Body Console features a custom printer mount, 14" rated capacity, and lock box. The AR Secure model conceals a ZRT Gun Rack. Top-down installation using one of our floor plates and requires no drilling.



## WIDE BODY CONSOLE

Length .....28.25"  
Width.....3.139"  
Height.....10.25"  
Depth .....6.436 - 10"  
Weight .....23.5 lbs  
**Rated Capacity:**  
20" of face plates



425-6445

## WIDE BODY INTEGRATED PENTAX/BROTHER CONSOLE

Length .....23.69"  
Width.....13.15"  
Height.....10.15"  
Depth .....6.52 - 9.02"  
Weight .....23 lbs  
**Rated Capacity:**  
14" of face plates



425-6554

## WIDE BODY AR SECURE CONSOLE

Length .....28.3"  
Width.....15.179"  
Height.....10.154"  
Depth .....6.671 - 13.133"  
Weight .....36.55 lbs  
**Rated Capacity:**  
20" of face plates



425-6491





# JOTTO DESK® NO HOLES MOUNT

Field-proven over 20 years, the Jotto Desk® offers mobile professionals the best laptop mount for cars, trucks, vans, SUVs and Big Rigs.

- **Articulated Arm**  
1" square x 13.375" solid aluminum; black anodized
- **Telescoping Rod**  
7/8" x 12" steel with 5/8" turned swing arm rest
- **Stand**  
1" x 10" 11 gauge steel, black; round stock
- **Height Variation**  
21" - 25"
- **Base Mount**  
3/16" gauge master, one-piece base with tapped 7/8" mounting post



425-5046/4143



## HEAVY DUTY NO HOLES MOUNT

- **Heavy Duty Motion Arm**  
4.25" w x 0.75" thick x 9" long; black anodized
- **Upgraded Telescoping Rod**  
1.75" x 6" steel with swing arm
- **Upgraded Stand**  
2" x 15" .218 thickness, black; round stock
- **Height Variation**  
15.875" to 19.875"
- **Upgraded Base Mount**  
7 gauge steel, one-piece base

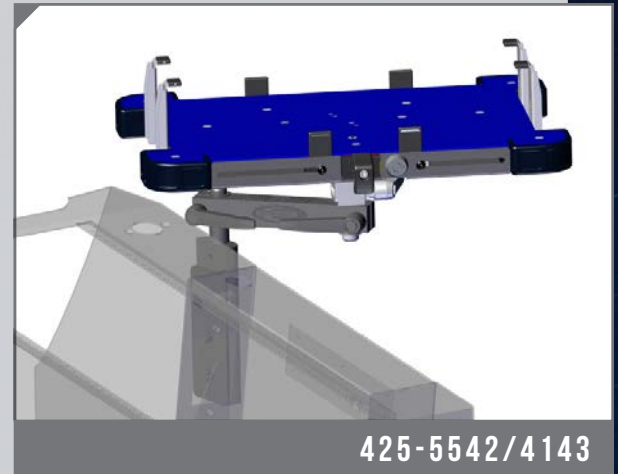


425-5043/4138



# CONSOLE SIDE MOUNTS

The JOTTO DESK™ Console Side Mount (CSM) features No Holes Drilled installation on the passenger side of a compatible equipment console, preserving front passenger side leg room and improving performance. The CSM offers a straight arm which enables you to comfortably use and secure a laptop using the A-MOD or other desktop.



425-5542/4143

## BUILT TO FIT:

WIDE BODY CONSOLE  
425-6445

WIDE BODY INTEGRATED  
PENTAX/BROTHER CONSOLE  
425-6554

CONTOUR CONSOLE  
425-6524



## A-MOD (ADJUSTABLE-MOBILE OPERATIONS DESKTOP)

450-4147  
A-MOD w/GK PLATE & SHORT CLAMPS

Width.....11.25" to 13.625"  
Depth .....9.25" to 11" (with extensions)  
Clamp Height.....0.5" to 1.10" (Short Clamp)  
Weight: .....4.65 lbs (5.65 lbs with GK Plate)



450-4144  
A-MOD XL w/GK PLATE & SHORT CLAMPS

Width.....13.5" to 16"  
Depth .....9.25" to 11" (with extensions)  
Clamp Height.....0.5" to 1.10" (Short Clamp)  
Weight: .....5.1 lbs (6.1lbs with GK Plate)



450-4153  
A-MOD XL w/GK PLATE & TALL CLAMPS

Width.....13.5" to 16"  
Depth .....9.25" to 11" (with extensions)  
Clamp Height.....1" to 2.25" (Tall Clamp)  
Weight: .....5.1 lbs (6.1lbs with GK Plate)



450-4143 A-MOD w/GK PLATE & TALL CLAMPS

Width.....11.25" to 13.625"      Clamp Height.....1" to 2.25" (Tall Clamp)  
Depth .....9.25" to 11" (with extensions)      Weight: .....4.65 lbs. (5.65 lbs with GK Plate)

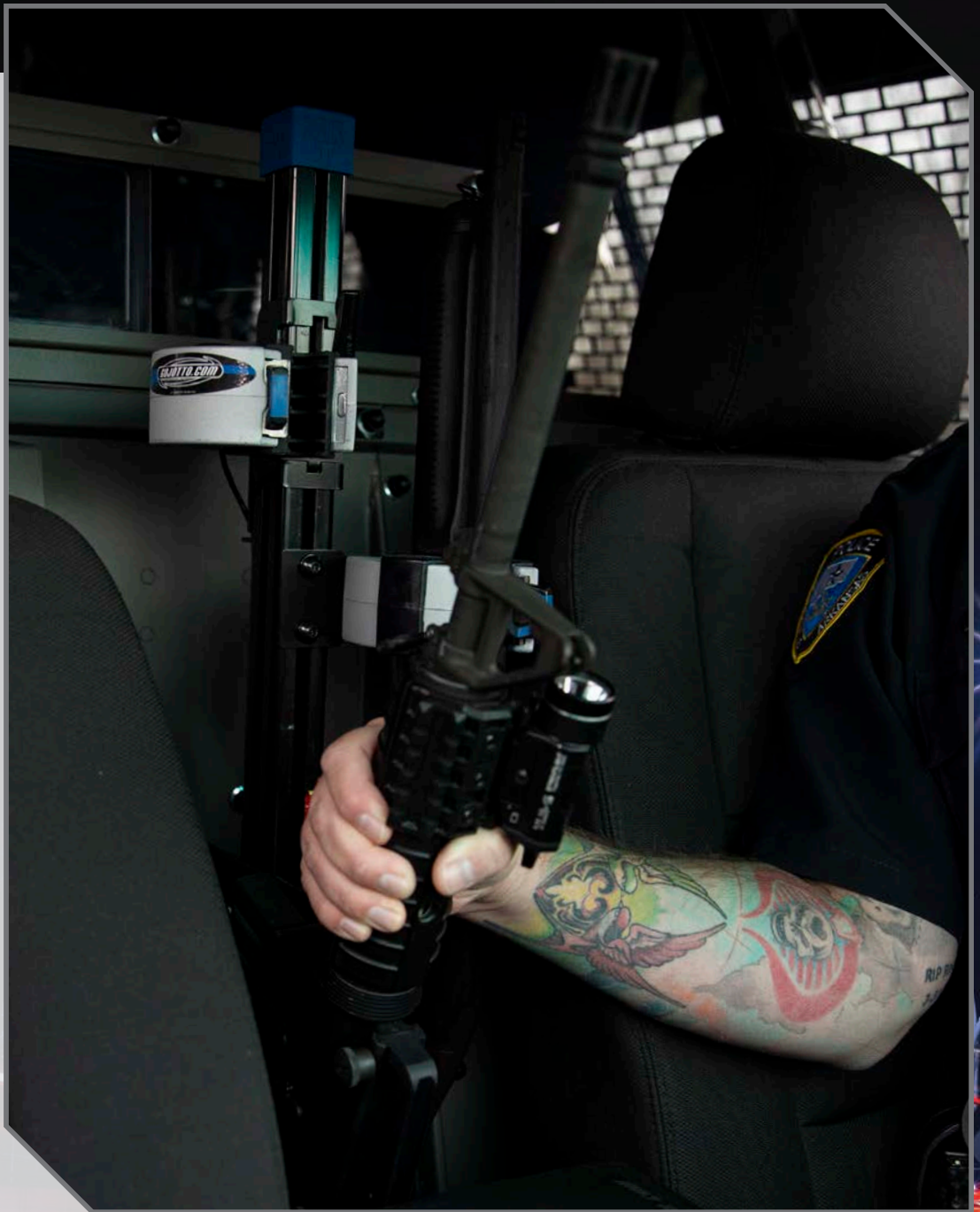
The A-MOD is engineered to be lightweight, yet rugged. Manufactured from steel, high strength aluminum, and composite materials where it makes sense. It's not real security if a laptop can be simply be stolen by jimmying the lock or bending the clamps. The A-MOD features a high-security solid brass tubular lock and case-hardened steel clamps.



# ZRT GUNS RACK

The ZRT Gun Racks are designed for any configuration you can imagine. Partition Mounted, Single Cell Mounted, Rear Seat Mounted or Free Standing, and Rear Hatch Mounted – Single Weapon or Dual.

- Eliminates 12V hot-wiring
- Cannot be defeated by magnets
- Zinc lock head design deforms instead of breaking
- Silicone inserts in lock head
- Protect weapon from damage
- Quickly adjust AR side along the strong extruded backbone to accommodate various stocks
- Single or dual weapon
- Plug and play lock head/timer wiring
- Compact size - 1/3 smaller than other lock heads
- Innovative slide latch recesses inside housing when accessing firearm



## SMARTLOX TECHNOLOGY

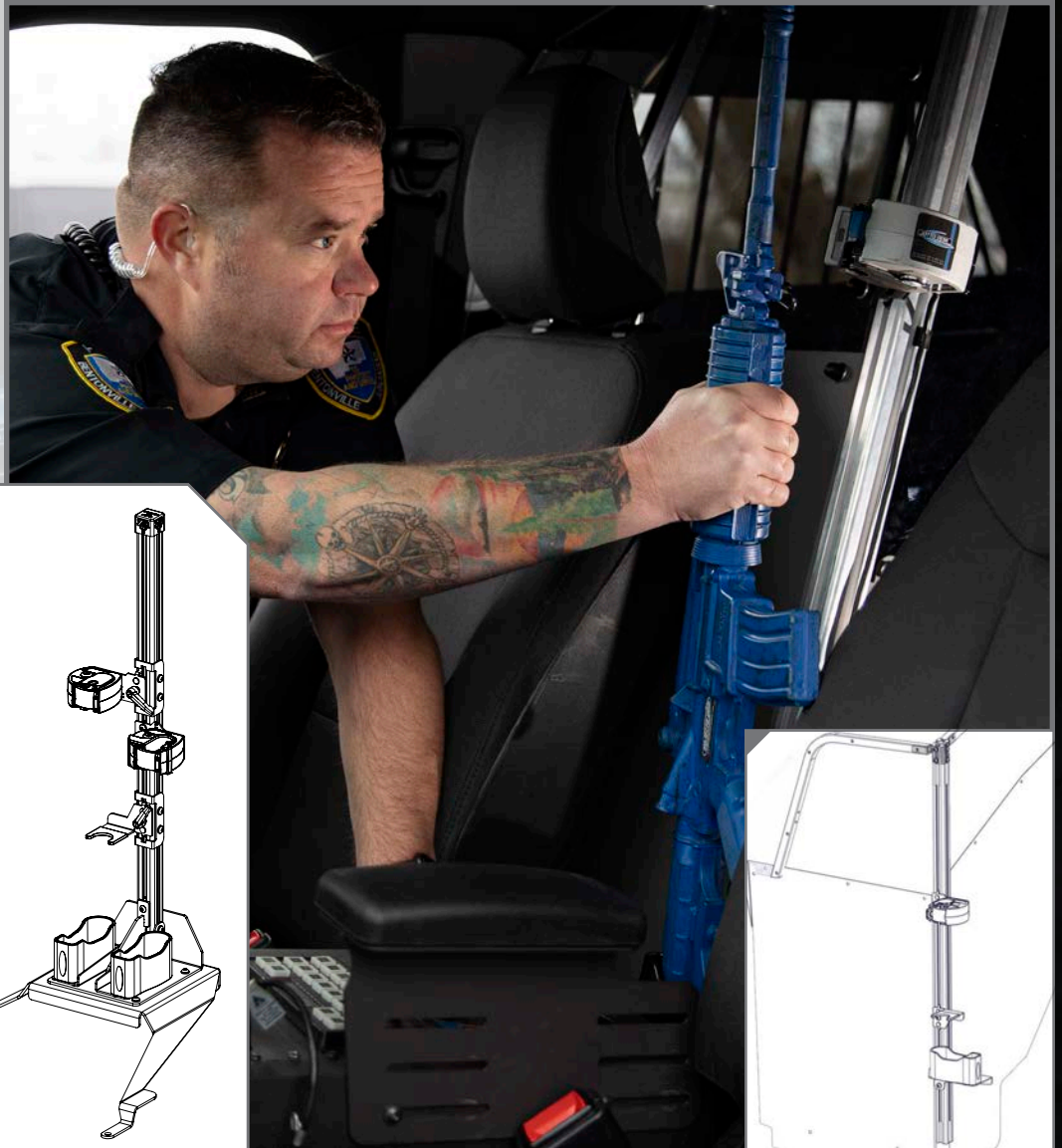


U.S. PATENT NO. 8,910,560 AND U.S. PATENT NO. 10,563,943

475-2010



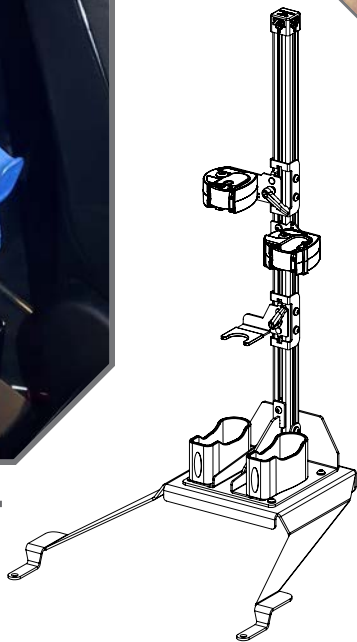
## SINGLE CELL MOUNT



475-2046



## REAR SEAT MOUNT



475-9473

| Model #  | Description                       | Location    | Weapon(s)          | Style    |
|----------|-----------------------------------|-------------|--------------------|----------|
| 475-2010 | GR9, ZRT, AR-BLM/870              | Partition   | Dual               | Vertical |
| 475-2063 | GR9, ZRT, AR-GL3-XL/870           | Partition   | Dual               | Vertical |
| 475-2015 | GR9, ZRT, AR-BLM                  | Partition   | Single (AR)        | Vertical |
| 475-2014 | GR9, ZRT, 870                     | Partition   | Single (870)       | Vertical |
| 475-2054 | GR9, ZRT, AR-BLM                  | Partition   | Dual (AR)          | Vertical |
| 475-2052 | GR9, ZRT, AR SECURE-BLM/870       | Partition   | Dual (AR Secure)   | Vertical |
| 475-2053 | GR9, ZRT, AR SECURE-BLM           | Partition   | Single (AR Secure) | Vertical |
| 475-2046 | GR7, ZRT, AR-BLM, SUV-PICKUP      | Single Cell | Single (AR)        | Vertical |
| 475-9473 | GR6, ZRT, AR-BLM/870, F-150 2021+ | Rear Seat   | Dual               | Vertical |



# SPACE CREATOR BIDIRECTIONAL VEHICLE PARTITION

Keep officers and prisoners safe during transport using Jotto Desk™ Space Creator Vehicle Partitions. The Bidirectional Recessed Housing maximizes officer workspace and prisoner legroom, building an extra layer of protection for your officer. Jotto Desk Vehicle Partitions are engineered to save time and money, utilizing the OEM mounting points instead of drilling new holes. Jotto Desk originated the Space Creator Vehicle Partition (US Patent No. 8,690,216) to transform unusable space behind the front passenger seat into extra legroom, enough to accommodate your bulkiest prisoner.



475-1810

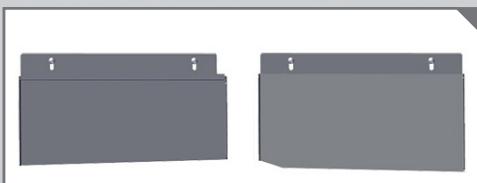


475-1811

## HSEP

(HIGH SECURITY EXTENSION PANEL)

Enhance partition security by preventing rear passengers from reaching into the front of the vehicle under seats with a two-piece, steel High Security Extension Panel.



475-1107



## HIGH SECURITY/HIGH VISIBILITY WINDOW

A High Security/High Visibility (HS/HV) Window gives officers the best of both worlds - tremendous sight lines, whether looking out the rearview or turning around. The 4"H x 11"W window allows for communication or passing of information but there won't be anyone that will squeeze through this opening. If a prisoner spits/bleeds/smears the window - it is still easily cleanable...not so with "expanded metal".





# WINDOW ARMOR

Protect your vehicles while transporting prisoners with the Jotto Desk™ line of Window Armor. Easy to install, helps prevent side windows from being kicked out and nobody can reach in or out of the prisoner compartment.

## REAR WINDOW ARMOR



475-1168

## DOOR WINDOW ARMOR



475-1167

# SINGLE CELL LITE

The Single Cell Lite for the 2018+ Ford F-150 SSV/ Police Responder includes the Front Divider, Center Divider, Rear Window Armor and Door Window Armor. Jotto Desk realized the extreme challenge facing agencies in regard to the rear seat area of pickups and has created a solution for prisoner containment in those vehicles. The bottom 2/3 of the front divider and center divider is powder coated steel with a built-in HSEP for added prisoner foot room. We didn't want to give prisoners a birds-eye view of the "good guy" side of the vehicle when you don't have to. The upper 1/3 is polycarbonate and has been designed to allow for prisoner viewing/ interaction but not diminish drivers view out the rear view mirror. In fact, the visibility for an officer is nothing short of amazing.



475-1812

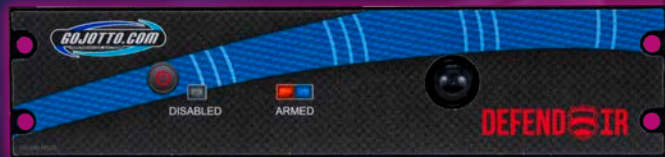


# DEFEND IR

You take every available precaution to secure your patrol vehicle; firearms in the gun rack, locking equipment and doors. The inconvenient truth is that the criminal element has time on their side to bypass these precautions.

Jotto Desk is excited to introduce the Defend IR Security System. The first Security Solution against patrol vehicle break-ins. The Defend IR Monitors the interior of your vehicle utilizing an infrared sensor when armed. When a change is detected, the Defend IR activates the lights and siren of the patrol vehicle, alerting everyone nearby and scaring off a potential thief.

Patent Pending



209 W. EASY ST., ROGERS, AR 72756 • [www.EVERYTHINGBUTLIGHTS.com](http://www.EVERYTHINGBUTLIGHTS.com) • 8/22

Jotto Desk™ is a patented product and Registered Trademark of Assembled Products Corporation.  
Specifications subject to change without notice.