

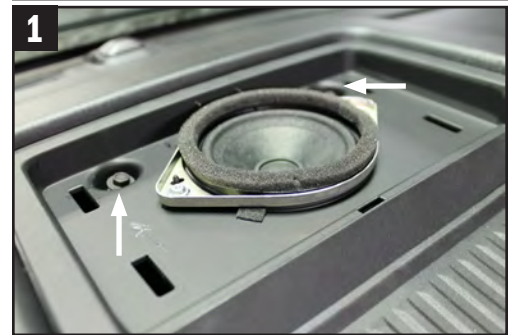
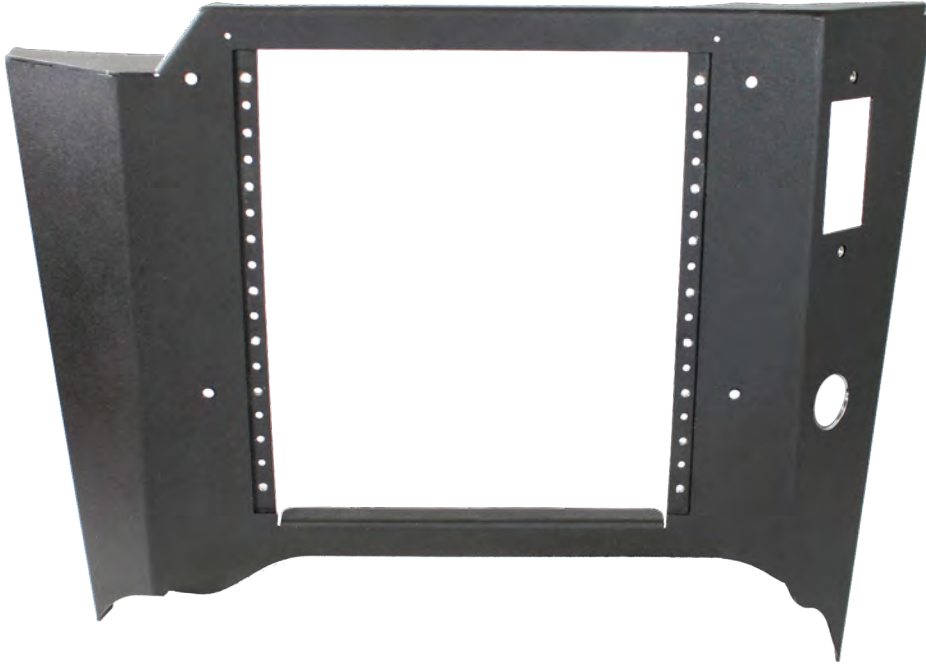


VERTICAL DASH MOUNT CONTOUR CONSOLE

2018-2020 FORD F-150 PR/SSV | 2018-2022 F-250-550

Installation Instructions

425-6648



1. Unsnap speaker cover from each side corner to remove (2) 7 mm screws.



2. Pry the top tray up from each front corner and remove the (2) 7 mm screws. Unplug speaker from the harness.



3. Pry from the top to unsnap the trim covering the radio and climate controls. Unplug the heater control from the harness.



4. Remove the left and right climate sections containing the 12"volt plug and the 4x4 knob selector, unplugging each from the wiring harness.



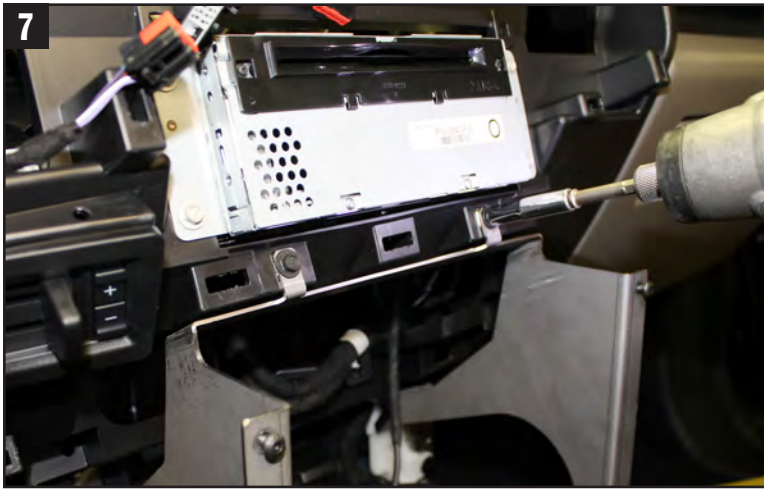
5. Remove (1) 10 mm screw holding the lower trim in place rotate over the transmission hump and unsnap from the passenger side.



Installation instructions continued on the next page.



6. Remove lower panel containing 12 volt power and USB by unscrewing (2) 7 mm screws on the top and (2) 10 mm screws on the bottom. Unplug accessories from harness.



7. Install the Console Support Bracket with the previously removed 7 mm and 10 mm OEM screws from step 6.



8. Replace trim components that were removed in steps 1, 2, 3 and 4.

9. Attach the Console to the Console Support Bracket with provided hardware.

If you have questions or need further assistance please call Technical Support: 1.877.455.6886



209 W. EASY ST., ROGERS, AR 72756 • JOTTOPUBLICSAFETY.COM • 6/24

Jotto Desk™ is a patented product and Registered Trademark of Assembled Products™ Corporation.
Specifications subject to change without notice.

050-0168-00

